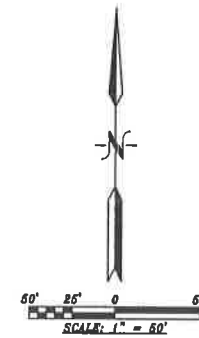


PLAT OF TRACTS 4-A-2-R-A, 4-A-2-R-B, & 4-A-2-R-C

WITHIN
SECTION 21, T.10N., R.7E., N.M.P.M.
TOWN OF EDGEWOOD
SANTA FE COUNTY, NEW MEXICO
AUGUST, 2018

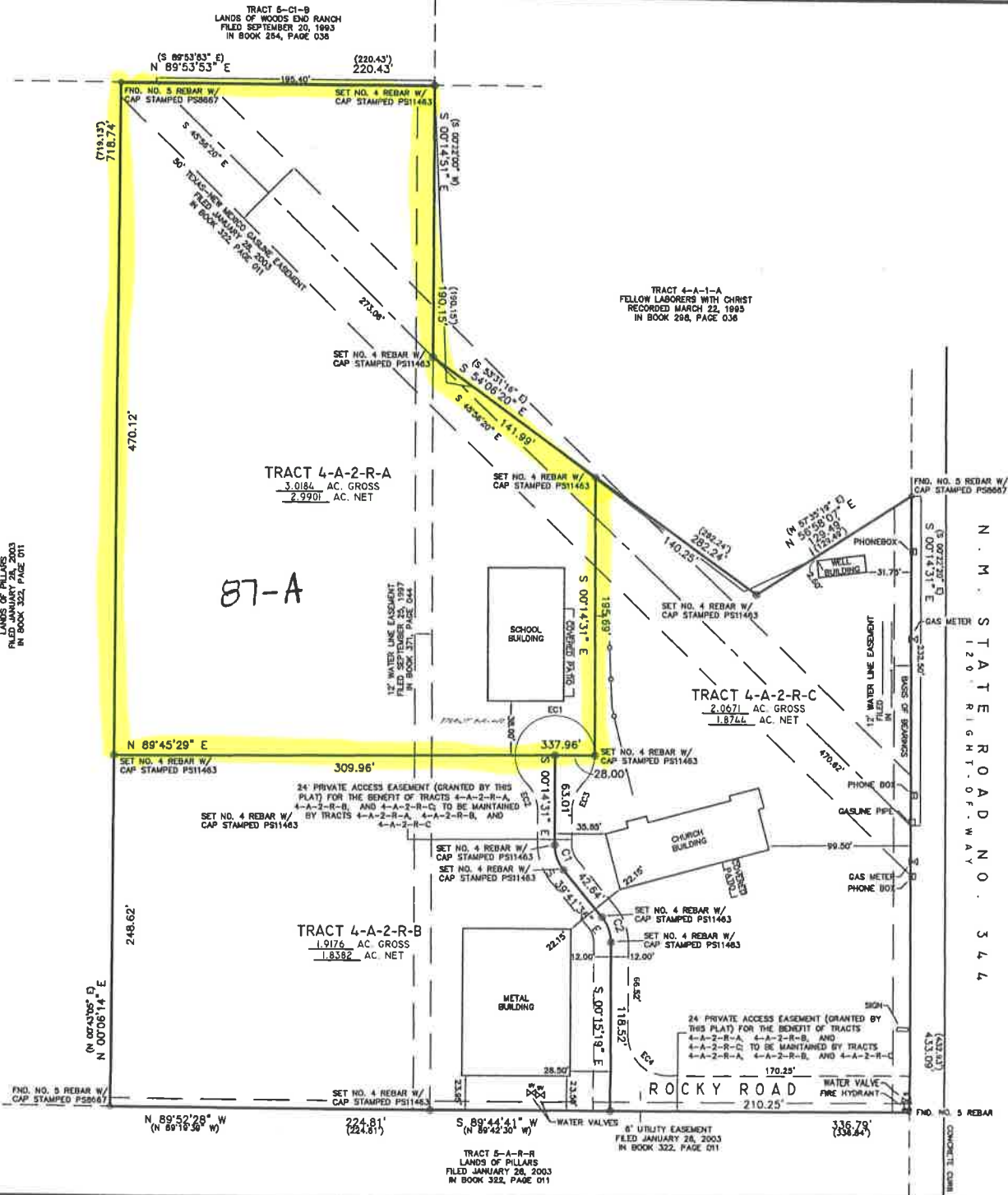


CURVE TABLE

CURVE	ARC LENGTH	RADIUS	DELTA ANGLE	CHORD BEARING	CHORD LENGTH
C1	19.28'	28.00'	139°27'05"	S 19°58'04" E	18.80'
C2	19.27'	28.00'	139°26'17"	N 19°58'27" W	18.89'

EASEMENT CURVE TABLE

CURVE	ARC LENGTH	RADIUS	DELTA ANGLE	CHORD BEARING	CHORD LENGTH
EC1	131.38'	28.00'	1268°49'50"	S 89°45'29" W	40.00'
EC2	21.71'	28.00'	44°24'55"	N 22°26'59" W	21.17'
EC3	21.71'	28.00'	44°24'55"	S 21°57'56" W	21.17'
EC4	43.98'	28.00'	90°00'00"	S 45°15'19" E	39.60'



87-A

N. M. STATE ROAD NO. 344

6" UTILITY EASEMENT
FILED JANUARY 28, 2003
IN BOOK 322, PAGE 011

THE SURVEY OFFICE, LLC
ALBUQUERQUE, NEW MEXICO PHONE: (505) 998-0303
313 LOMAS BLVD., N.E. 87102 FAX: (505) 998-0305